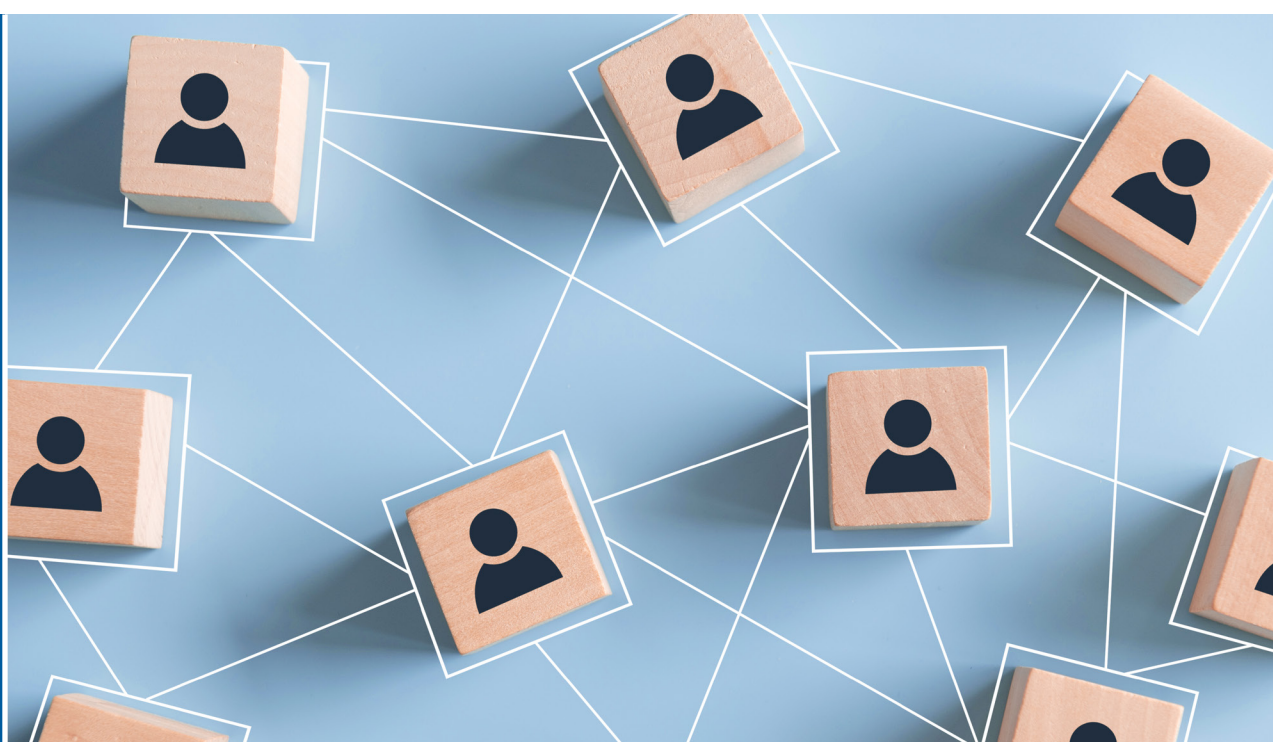


Interoperability



Connect for better partnerships and better outcomes.

Interoperability is the future of healthcare. Being able to quickly exchange up-to-date patient data across the healthcare continuum will increase efficiency, decrease costs, and improve outcomes.

MatrixCare's CareCommunity Connect facilitates this data exchange using Carequality, a nationwide network that provides real-time connections to its participants. **Here are six ways CareCommunity Connect can help you meet the needs of your referral partners, providers, and patients.**



You need the unlimited exchange of patient data.

- CareCommunity Connect enables easy access to holistic patient data from all care settings to help drive efficient care coordination.
- Permission-based access puts patient records at providers' fingertips in real time.
- Data moves securely among networks, platforms, and geographies.



You need smooth admissions with no missing patient records or document entry delays.

- CareCommunity gives you access to a patient's complete medical history, including clinical information, documents, and medications.
- Complete health data leads to accurate diagnoses at admission, allowing staff to begin administering care right away.
- Patient data is available including discrete labs, medications, vitals, allergies, medical history, and demographic information.



You need streamlined transitions of care.

- Document integration allows you to coordinate with all care settings and providers, allowing you to find any part of a patient's care history.
- Automated document queries to hospitals and providers reduces time needed for staff to call or fax for information.
- Rapidly import documents to reconcile medications, allergies, and diagnoses to help improve care planning and coordination.



You need to operate efficiently and minimize errors.

- For patients and residents under your care, the search function in CareCommunity Connect allows users to quickly search for patient data on medical history, medications, or past conditions.
- Reconciling electronic orders gives providers accurate data and reduces transcription and medication errors during admission.



You need to reduce paper documents and manual data entry.

- CareCommunity Connect brings all the necessary patient information into your EHR to reduce lost, damaged, or missing documents.



You need to enhance partnerships with referral sources.

- Sharing documents and data electronically with external partners gives them the information they need without disrupting workflows.
- Sharing your facility's health data with acute care providers helps them monitor a patient's progress after discharge.
- Using interoperability to reduce data entry errors leads to improved patient care, reducing readmissions and strengthening partnerships with your referral sources.



It's time to connect.

CareCommunity Connect lets you reap the benefits of interoperability by leveraging a nationwide network that keeps everyone caring for a patient up to date, no matter where care is provided.

Learn more about what interoperability can do for you.